



STAINLESS STEEL CENTRIFUGAL PUMPS

3S

INDUSTRY APPLICATION

Horizontal single-stage volute casing pumps of range „3“ acc. to EN 733 (DIN 24255) are used for pumping clean and low contaminated liquids, without abrasive, coarse or extended solids.

The centrifugal pumps of type „3S“ are close coupled pumps with standard IEC-norm electric motor. This range is available in stainless steel AISI 304 and AISI 316.



Application range:

- Chemical industry
- Water supply systems
- Booster plants
- Washing plants
- Cooling and heating circuits
- Sprinkler and irrigation systems

PROPERTIES AND ADVANTAGES

- **Very high price-/performance ratio**

- **Large pump range**

Because of the variety of different sizes this pump range covers a broad performance spectrum.

- **Wide variety of mechanical seal materials**

Depending on the pumped liquid, different gasket materials can be chosen.

- **Compact design**



Ideal for applications where the spatial conditions are limited. The space-saving, short-coupled monobloc pump is very flexible and can be used variably. The pump is mounted directly on an IEC standard electric motor. User-friendly, flexible, secure and space saving.

- **Very high variability** - construction for IEC-norm motor

- **Maintenance**

Easy maintenance and repair work without dismantling the piping. Expansion of the plug-in unit by disassembling of the casing screws is possible.

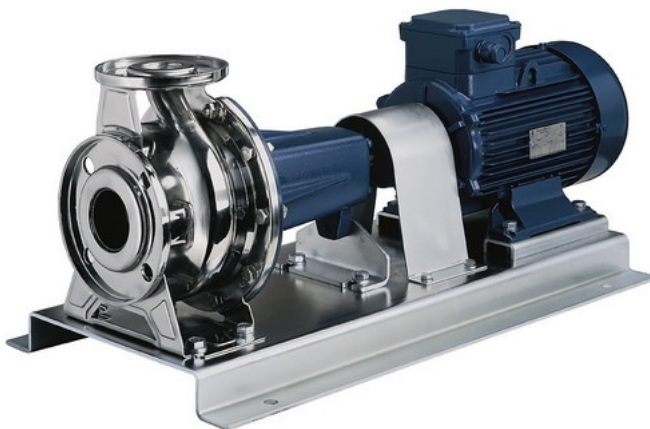
- **ATEX-Version**

Pumps and pump-units can be certificated for ATEX. For the available designs, materials and the possible accessories please contact our sales department.



- **Bare shaft execution with bearing bracket „3PF“ and „3P“**

The complete range „3“ is also available in bare shaft execution with bearing bracket, mounted on a base plate with elastic coupling (with disassembling device) and IEC norm motor.



Details you can find in the separate brochure.

- **Close-coupled execution „3M“**

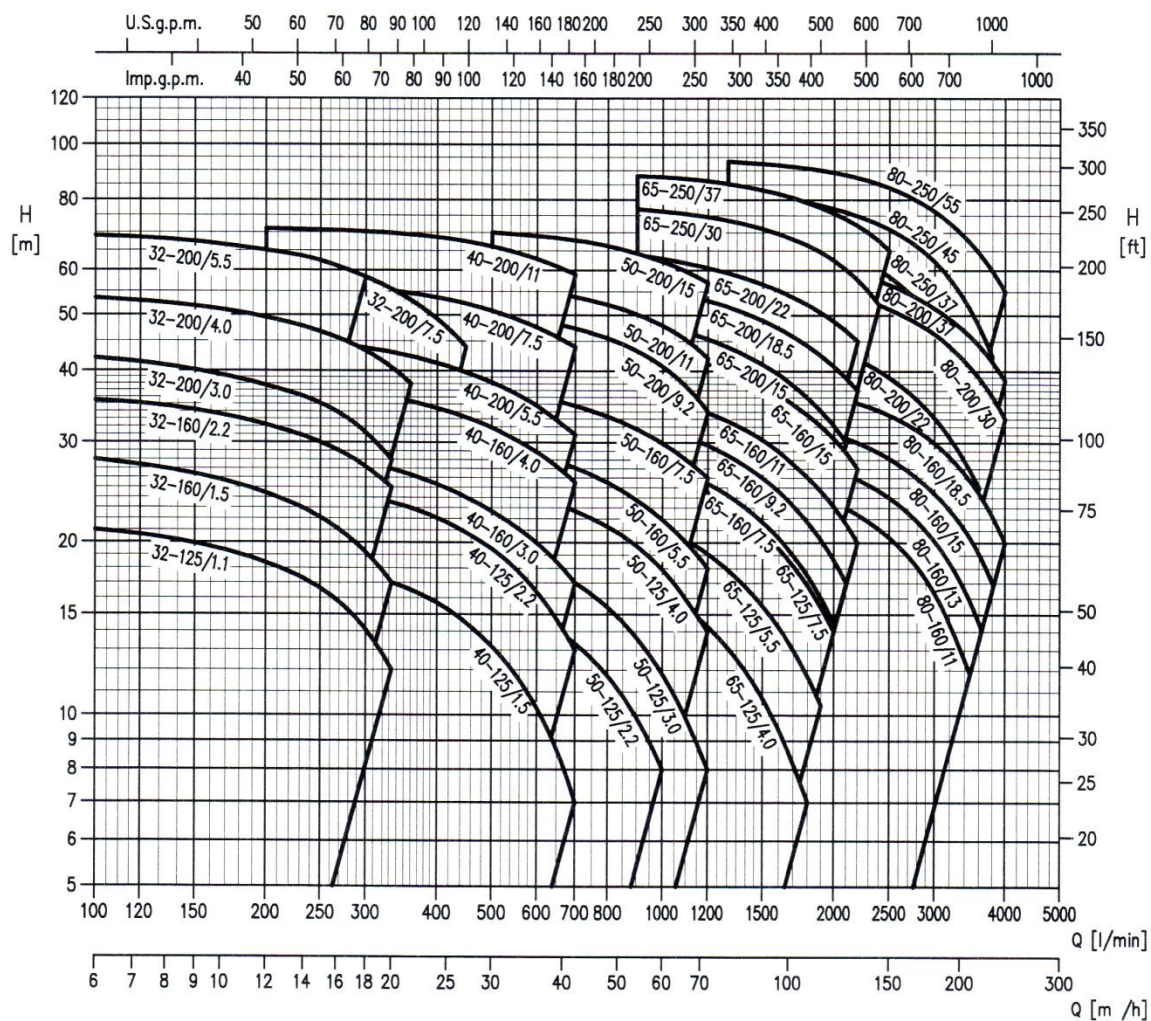
The complete range „3“ is also available as close-coupled pump directly connected to an electric motor with extended motor shaft.



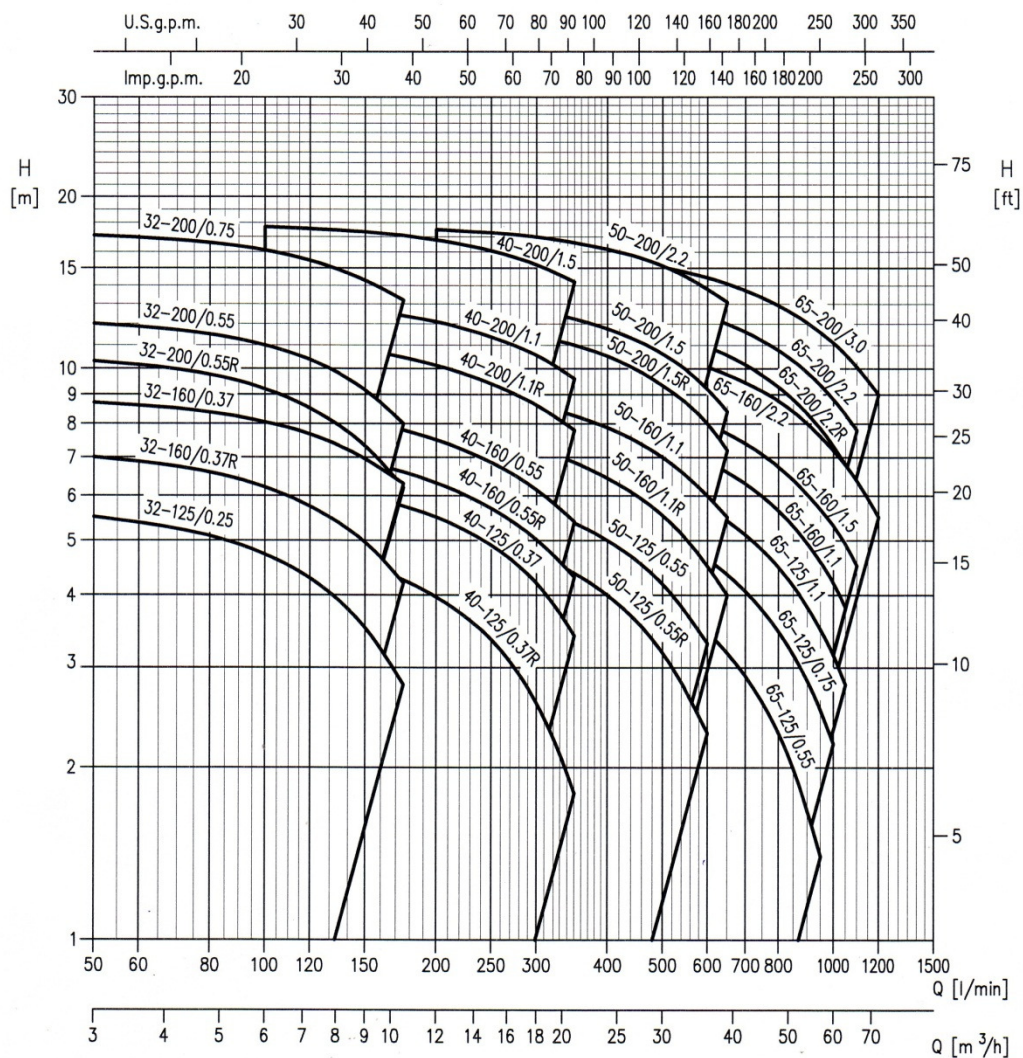
Details you can find in the separate brochure.

PUMP SELECTION

Performance curve – 2.900 min⁻¹

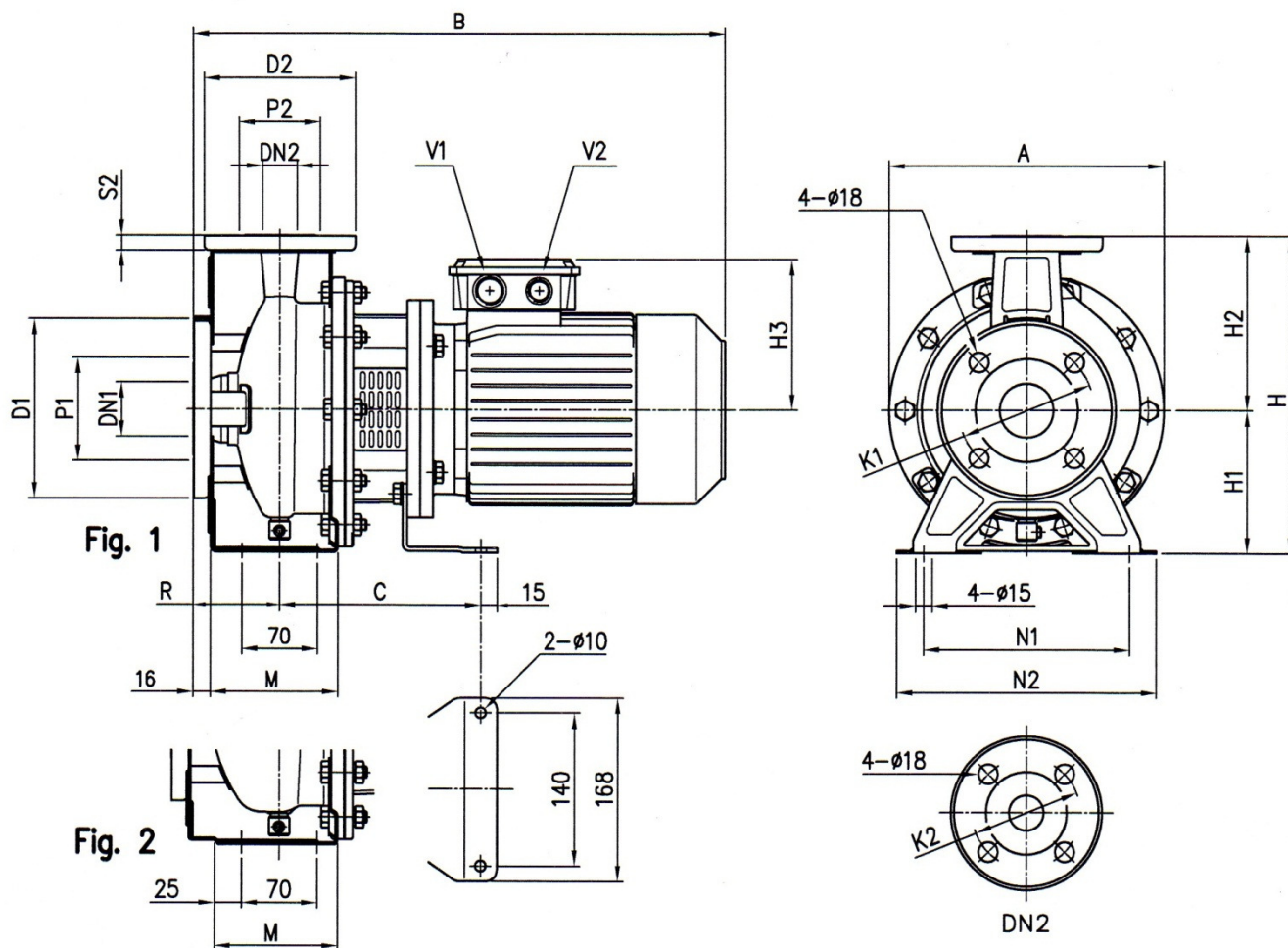


Performance curve – 1.450 min⁻¹

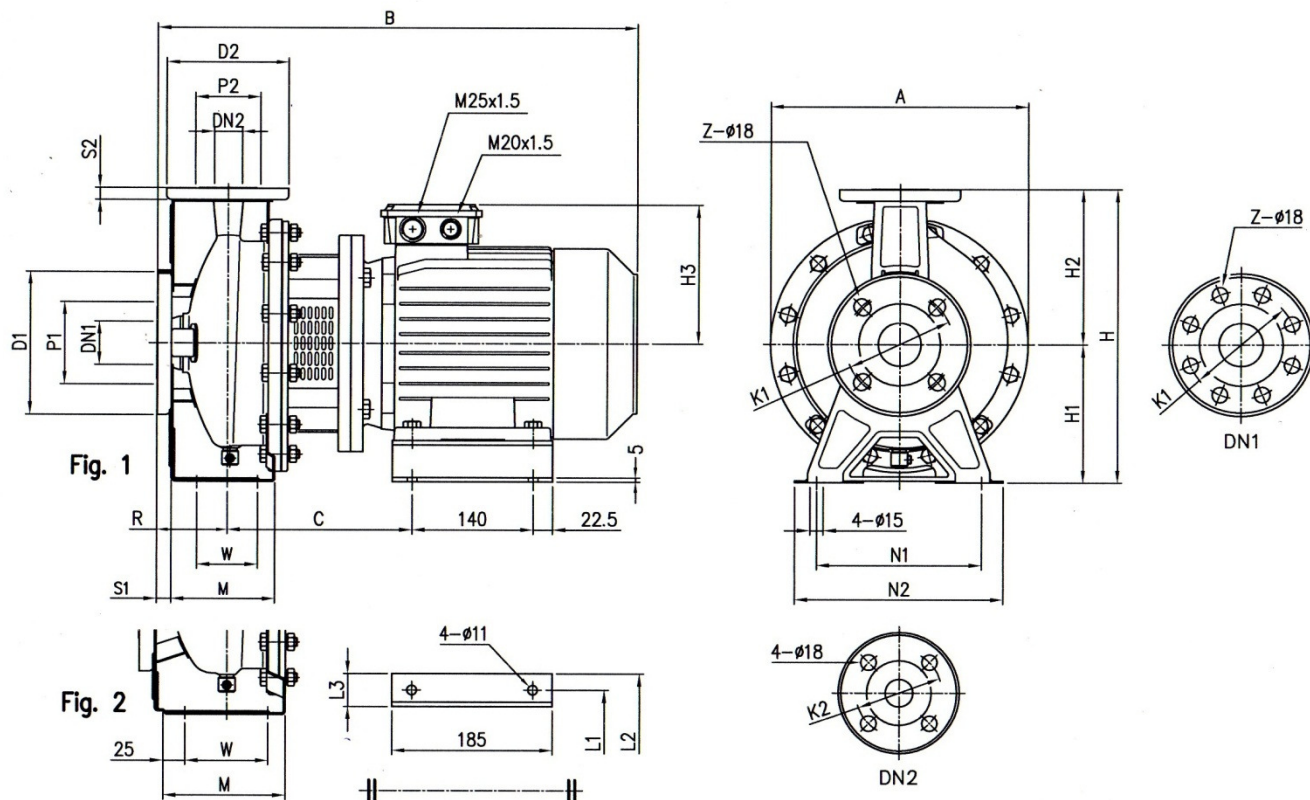


DIMENSIONS

Dimensions – 2.900 min-1



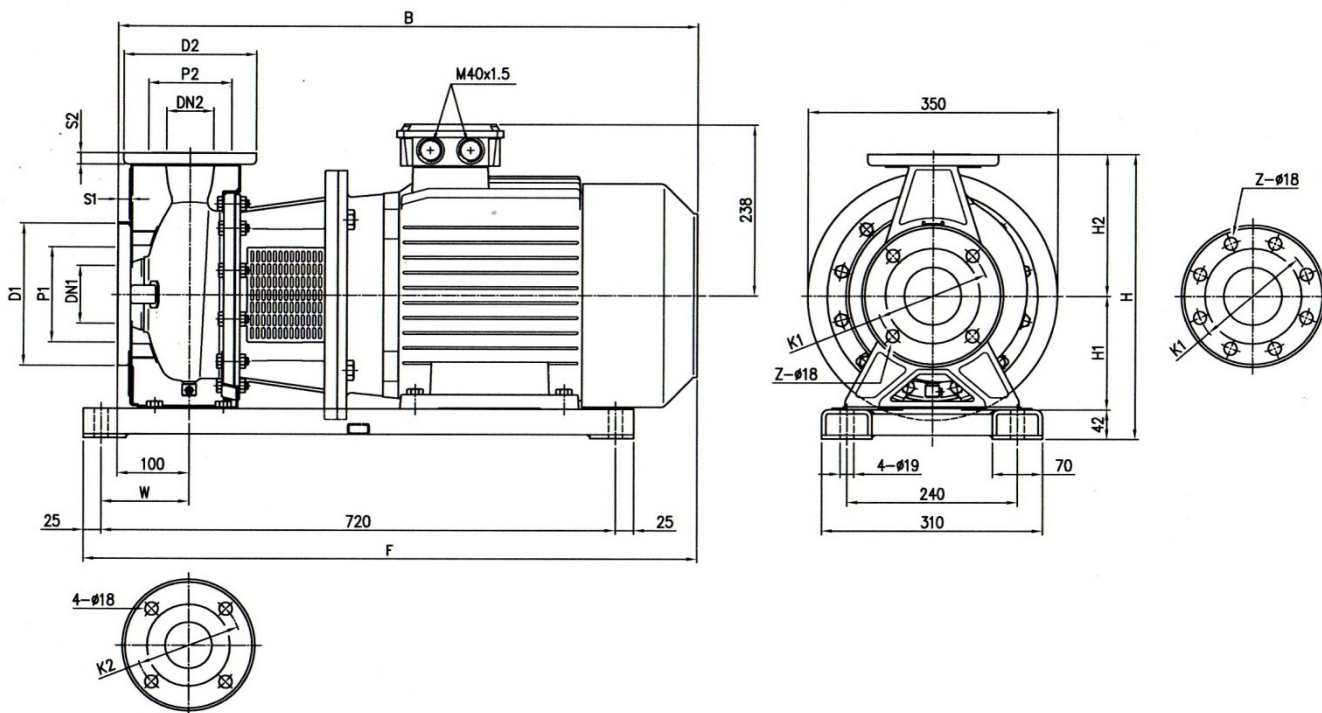
Model	Dimensions [mm]																						Weight [kgf]	
	Ø DN1	Ø P1	Ø K1	Ø D1	Ø DN2	Ø P2	Ø K2	Ø D2	S2	Fig.	H	H1	H2	H3	R	M	N1	N2	A	B	C	V1		V2
32-125/1.1	50	95	125	165	32	75	100	140	14	1	252	112	140	129	80	114	140	190	213	430	174	M25x1.5	M20x1.5	23.1
32-160/1.5	50	95	125	165	32	75	100	140	14	1	292	132	160	138	80	118	190	240	254	477	186	M25x1.5	M20x1.5	28.5
32-160/2.2	50	95	125	165	32	75	100	140	14	1	292	132	160	138	80	118	190	240	254	477	186	M25x1.5	M20x1.5	32.4
40-125/1.5	65	115	145	185	40	80	110	150	14	1	252	112	140	138	80	114	160	210	213	477	186	M25x1.5	M20x1.5	26.5
40-125/2.2	65	115	145	185	40	80	110	150	14	1	252	112	140	138	80	114	160	210	213	477	186	M25x1.5	M20x1.5	29.6
50-125/2.2	65	115	145	185	50	95	125	165	16	2	292	132	160	138	100	114	190	240	254	497	186	M25x1.5	M20x1.5	32.9



Model	Dimensions [mm]																											Weight [kgf]	
	Ø DN1	Ø P1	Ø K1	Ø D1	S1	Z [1]	Z [2]	Ø DN2	Ø P2	Ø K2	Ø D2	S2	Fig.	H	H1	H2	H3	R	W	M	N1	N2	A	B	C	L1	L2		L3
32-200/3.0	50	95	125	165	16	4	-	32	75	100	140	14	1	340	160	180	145	80	70	119	190	240	296	528	205	160	202	42	43.4
32-200/4.0	50	95	125	165	16	4	-	32	75	100	140	14	1	340	160	180	161	80	70	119	190	240	296	550	212	190	228	38	45.9
65-125/4.0	80	134	160	200	18	8	4	65	115	145	185	16	2	340	160	180	161	100	95	140	212	280	254	570	212	190	228	38	47

[1] Standard

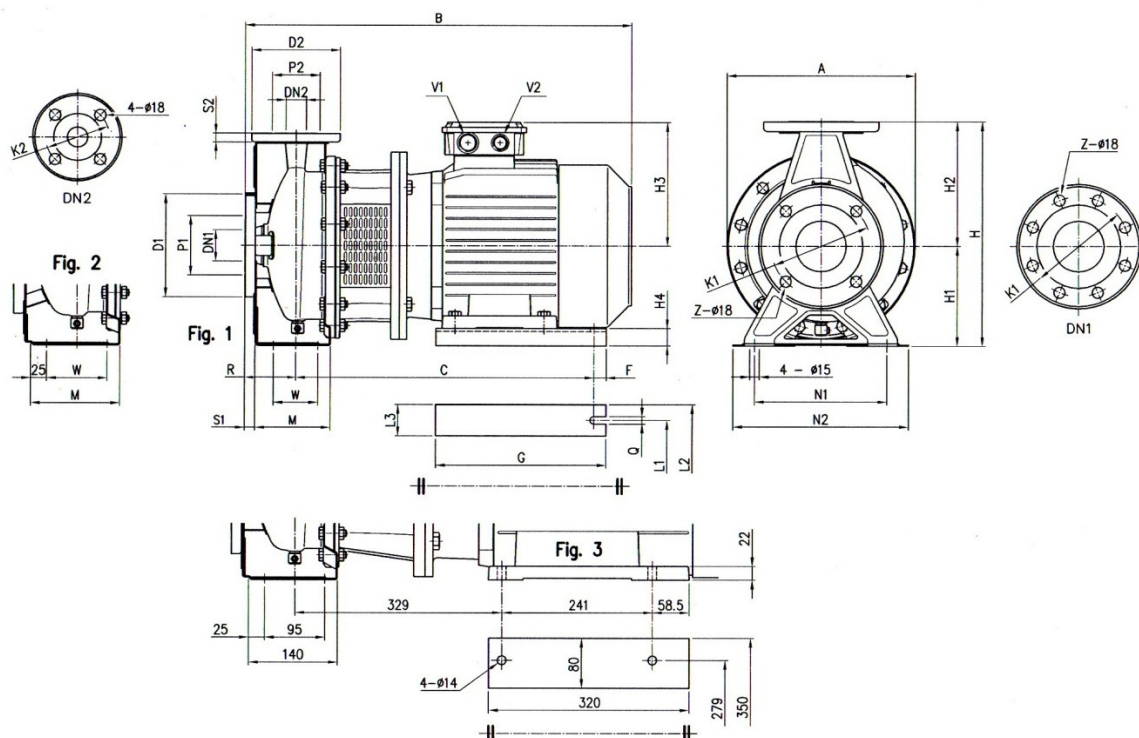
[2] On request



Model	Dimensions [mm]																		Weight [kgf]
	Ø DN1	Ø P1	Ø K1	Ø D1	S1	Z [1]	Z [2]	Ø DN2	Ø P2	Ø K2	Ø D2	S2	H	H1	H2	W	B	F	
40-200/11	65	115	145	185	16	4	-	40	80	110	150	14	382	160	180	110	798	833	107
50-200/11	65	115	145	185	16	4	-	50	95	125	165	16	402	160	200	110	798	833	107
50-200/15	65	115	145	185	16	4	-	50	95	125	165	16	402	160	200	110	798	833	131
65-160/11	80	134	160	200	18	8	4	65	115	145	185	16	402	160	200	122.5	798	846	76
65-160/15	80	134	160	200	18	8	4	65	115	145	185	16	402	160	200	122.5	808	856	104

[1] Standard

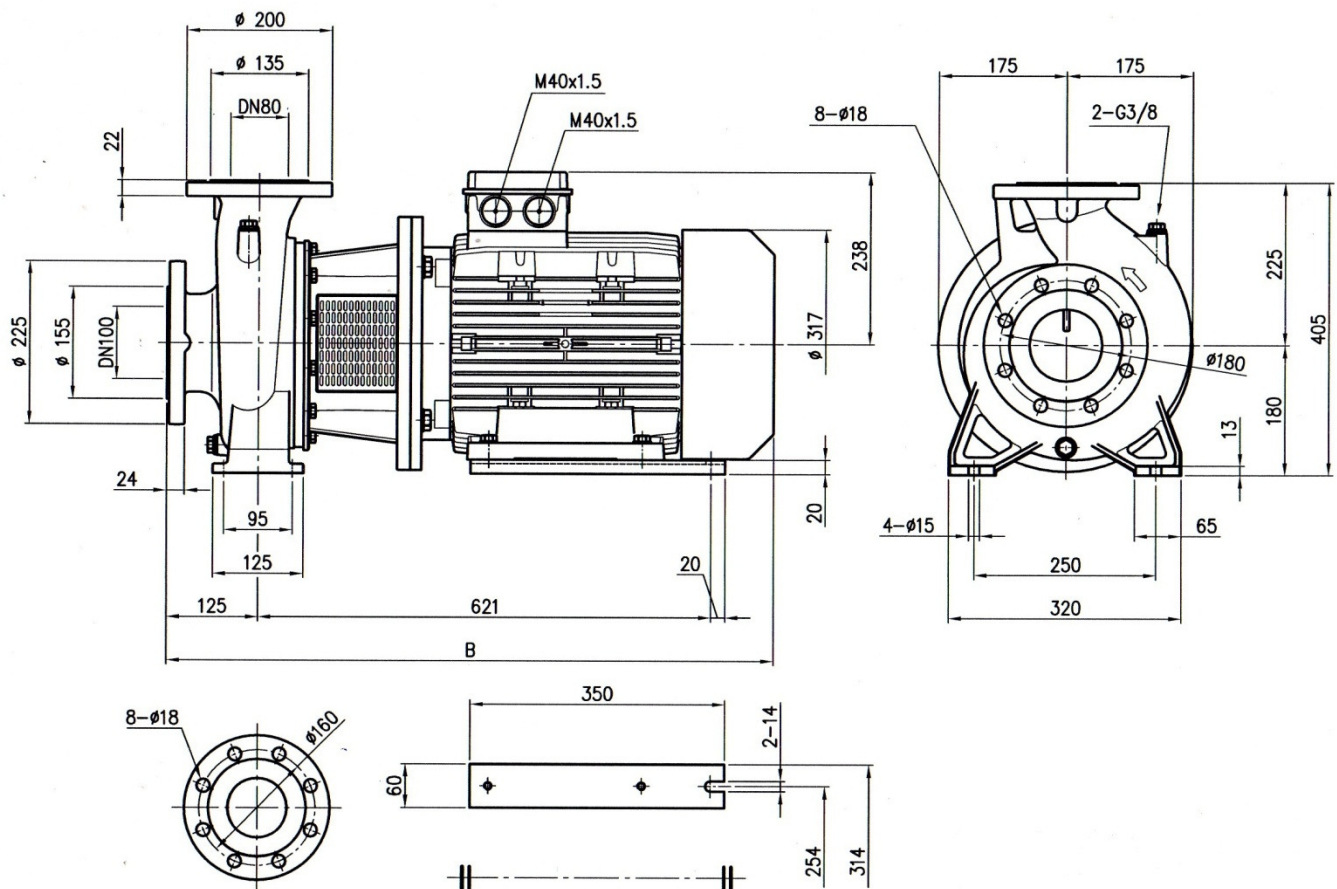
[2] On request



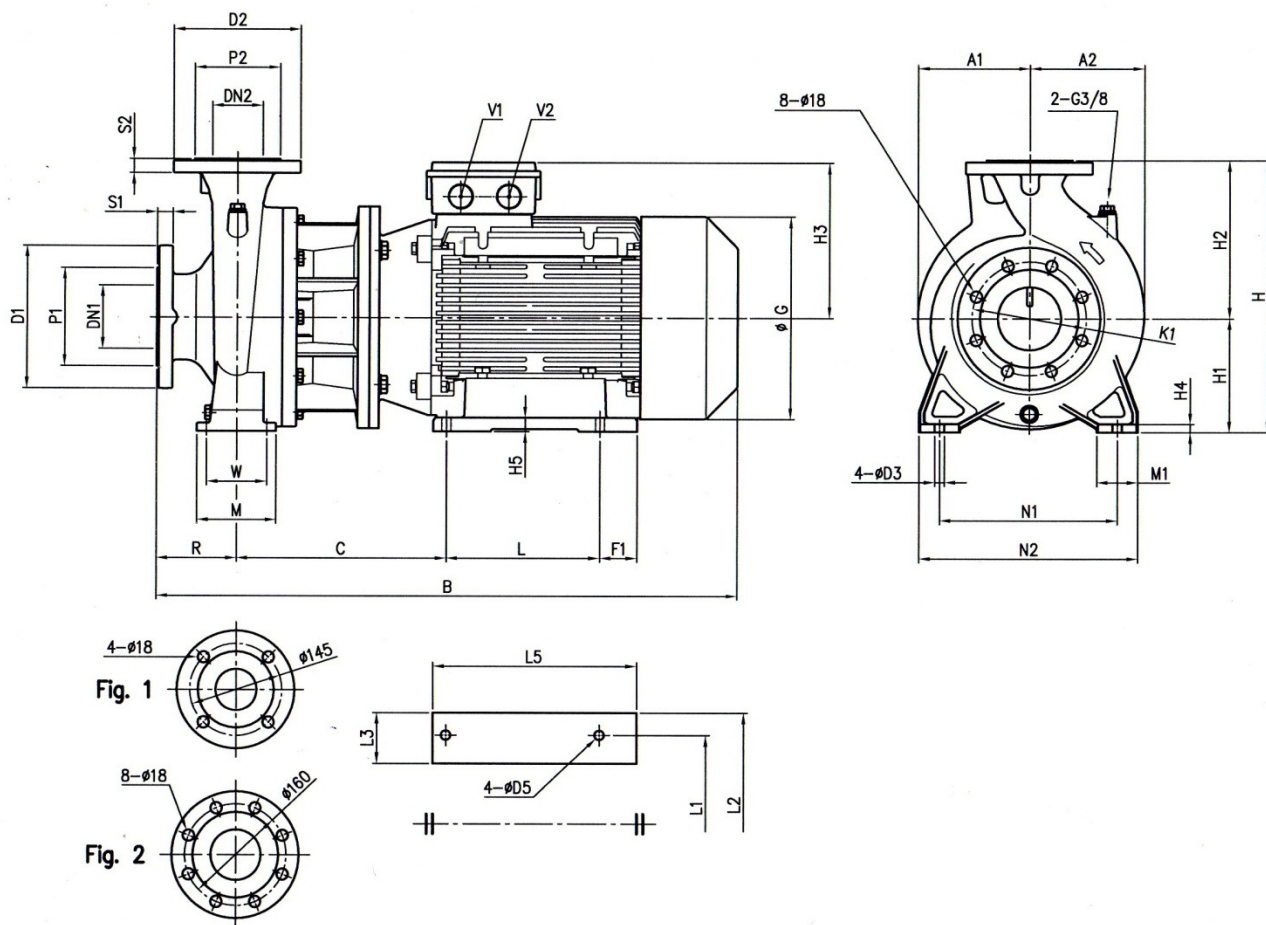
Model	Dimensions [mm]																																Weight [kgf]			
	Ø DN1	Ø P1	Ø K1	Ø D1	S1	[1]	[2]	Ø DN2	Ø P2	Ø K2	Ø D2	S2	Fig.	H	H1	H2	H3	H4	R	W	M	N1	N2	A	B	C	F	G	Q	L1	L2	L3		V1	V2	
32-200/5.5	50	95	125	165	16	4	-	32	75	100	140	14	1	340	160	180	195	28	80	70	119	190	240	300	607	479	15	270	12	216	266	50	M32x1.5	M32x1.5	62.8	
32-200/7.5	50	95	125	165	16	4	-	32	75	100	140	14	1	340	160	180	195	28	80	70	119	190	240	300	607	479	15	270	12	216	266	50	M32x1.5	M32x1.5	74.6	
40-160/3.0	65	115	145	185	16	4	-	40	80	110	150	14	1	292	132	160	145	32	80	70	118	190	240	254	528	388	15	220	12	160	200	40	M25x1.5	M20x1.5	39	
40-160/4.0	65	115	145	185	16	4	-	40	80	110	150	14	1	292	132	160	161	20	80	70	118	190	240	254	550	395	15	220	12	190	240	50	M25x1.5	M20x1.5	41.5	
40-200/5.5	65	115	145	185	16	4	-	40	80	110	150	14	2	340	160	180	195	28	100	70	115	212	265	300	627	479	15	270	12	216	266	50	M32x1.5	M32x1.5	63.2	
40-200/7.5	65	115	145	185	16	4	-	40	80	110	150	14	2	340	160	180	195	28	100	70	115	212	265	300	627	479	15	270	12	216	266	50	M32x1.5	M32x1.5	69.6	
50-125/3.0	65	115	145	185	16	4	-	50	95	125	165	16	2	292	132	160	145	32	100	70	114	190	240	254	548	388	15	220	12	160	200	40	M25x1.5	M20x1.5	42	
50-125/4.0	65	115	145	185	16	4	-	50	95	125	165	16	2	292	132	160	161	20	100	70	114	190	240	254	570	395	15	220	12	190	240	50	M25x1.5	M20x1.5	42.5	
50-160/5.5	65	115	145	185	16	4	-	50	95	125	165	16	2	340	160	180	195	28	100	70	115	212	265	300	627	479	15	270	12	216	266	50	M32x1.5	M32x1.5	63.8	
50-160/7.5	65	115	145	185	16	4	-	50	95	125	165	16	2	340	160	180	195	28	100	70	115	212	265	300	627	479	15	270	12	216	266	50	M32x1.5	M32x1.5	69.6	
50-200/9.2	65	115	145	185	16	4	-	50	95	125	165	16	2	360	160	200	195	28	100	70	115	212	265	300	667	479	15	270	12	216	266	50	M32x1.5	M32x1.5	79.7	
65-125/5.5	80	134	160	200	18	8	4	65	115	145	185	16	2	340	160	180	195	28	100	95	140	212	280	300	627	479	15	270	12	216	266	50	M32x1.5	M32x1.5	60	
65-125/7.5	80	134	160	200	18	8	4	65	115	145	185	16	2	340	160	180	195	28	100	95	140	212	280	300	627	479	15	270	12	216	266	50	M32x1.5	M32x1.5	67	
65-160/7.5	80	134	160	200	18	8	4	65	115	145	185	16	2	360	160	200	195	28	100	95	140	212	280	300	627	479	15	270	12	216	266	50	M32x1.5	M32x1.5	70	
65-160/9.2	80	134	160	200	18	8	4	65	115	145	185	16	2	360	160	200	195	28	100	95	140	212	280	300	667	479	15	270	12	216	266	50	M32x1.5	M32x1.5	77	
65-200/15	80	134	160	200	18	8	4	65	115	145	185	16	2	405	180	225	238	20	100	95	140	250	320	350	808	621	20	350	14	254	314	60	M40x1.5	M40x1.5	128	
65-200/18.5	80	134	160	200	18	8	4	65	115	145	185	16	2	405	180	225	238	20	100	95	140	250	320	350	852	621	20	350	14	254	314	60	M40x1.5	M40x1.5	141	
65-200/22	80	134	160	200	18	8	4	65	115	145	185	16	3	405	180	225	245	-	100	-	-	250	320	350	888	-	-	-	-	-	-	-	-	M40x1.5	M40x1.5	160

[1] Standard

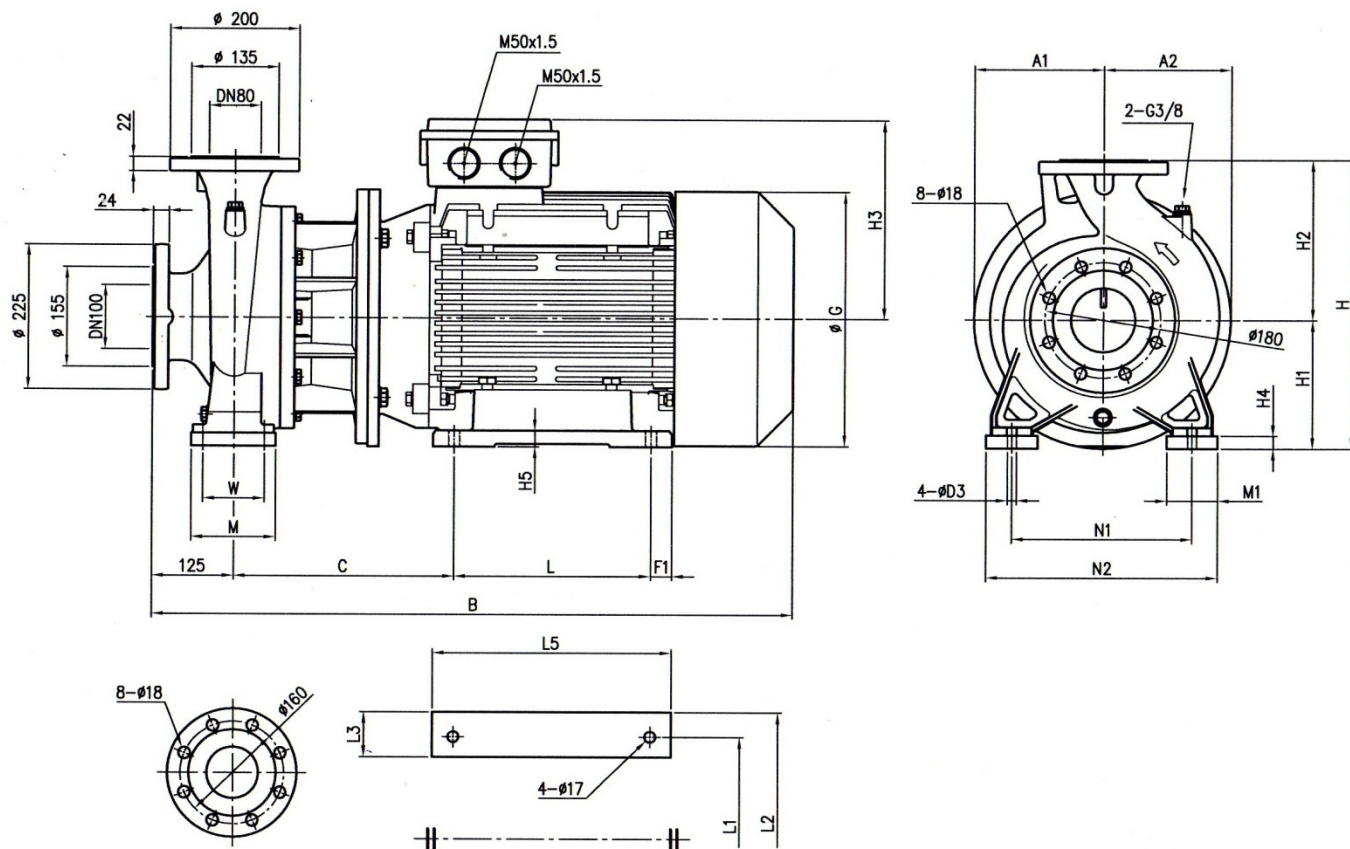
[2] On request



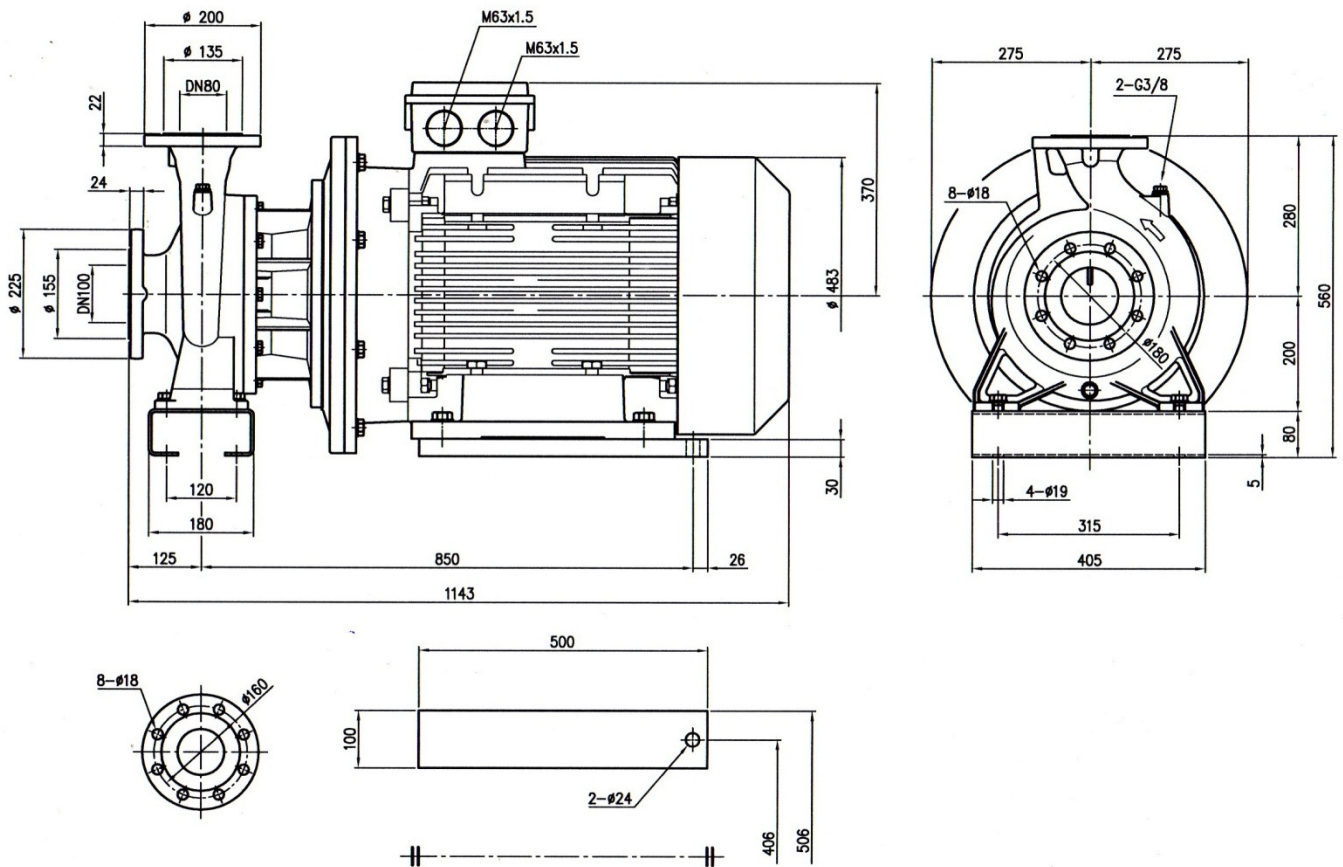
Pump type	B	Weight [kgf]
80-160/11	833	135
80-160/15R	833	147
80-160/15	833	147
80-160/18.5	877	155



Pump type	Dimensions [mm]																																Weight [kgf]				
	DN1	P1	K1	D1	S1	DN2	P2	D2	S2	H	H1	H2	H3	H4	H5	R	W	N1	N2	M	M1	L	L1	L2	L3	L5	A1	A2	B	C	F1	G		D3	D5	V1	V2
65-250/30	80	135	160	200	22	65 Fig. 1	120	185	20	450	200	250	310	15	25	100	120	280	360	160	80	305	318	395	70	370	200	200	968	341	32.5	396	19	17	M50x1.5	M50x1.5	303
65-250/37	80	135	160	200	22	65 Fig. 1	120	185	20	450	200	250	310	15	25	100	120	280	360	160	80	305	318	395	70	370	200	200	968	341	32.5	396	19	17	M50x1.5	M50x1.5	320
80-200/22	100	155	180	225	24	80 Fig. 2	135	200	22	430	180	250	245	13	22	125	95	280	345	125	65	241	279	350	80	320	175	182	913	329	58.5	320	15	14	M40x1.5	M40x1.5	200
80-250/37	100	155	180	225	24	80 Fig. 2	135	200	22	480	200	280	310	15	25	125	120	315	400	160	80	305	318	395	70	370	200	200	1021	369	32.5	396	19	17	M50x1.5	M50x1.5	335

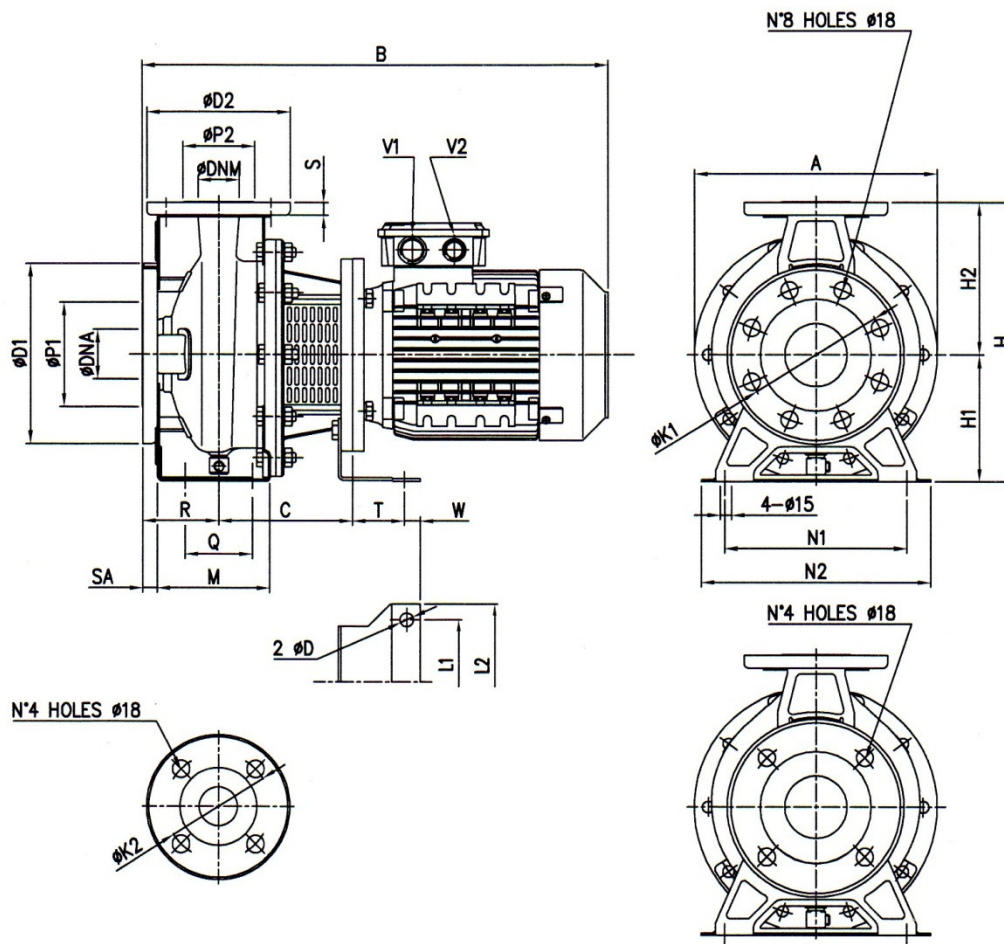


Pump type	Dimensions [mm]																							Weight [kgf]
	H	H1	H2	H3	H4	H5	W	N1	N2	M	M1	L	L1	L2	L3	L5	A1	A2	B	C	F1	G	D3	
80-200/30	450	200	250	310	20	25	95	280	360	130	80	305	318	395	70	370	200	200	993	341	32.5	396	14	306
80-200/37	450	200	250	310	20	25	95	280	360	130	80	305	318	395	70	370	200	200	993	341	32.5	396	14	325
80-250/45	505	225	280	335	25	28	120	315	415	165	100	311	356	435	75	393	225	225	1051	385	41	435	18	401

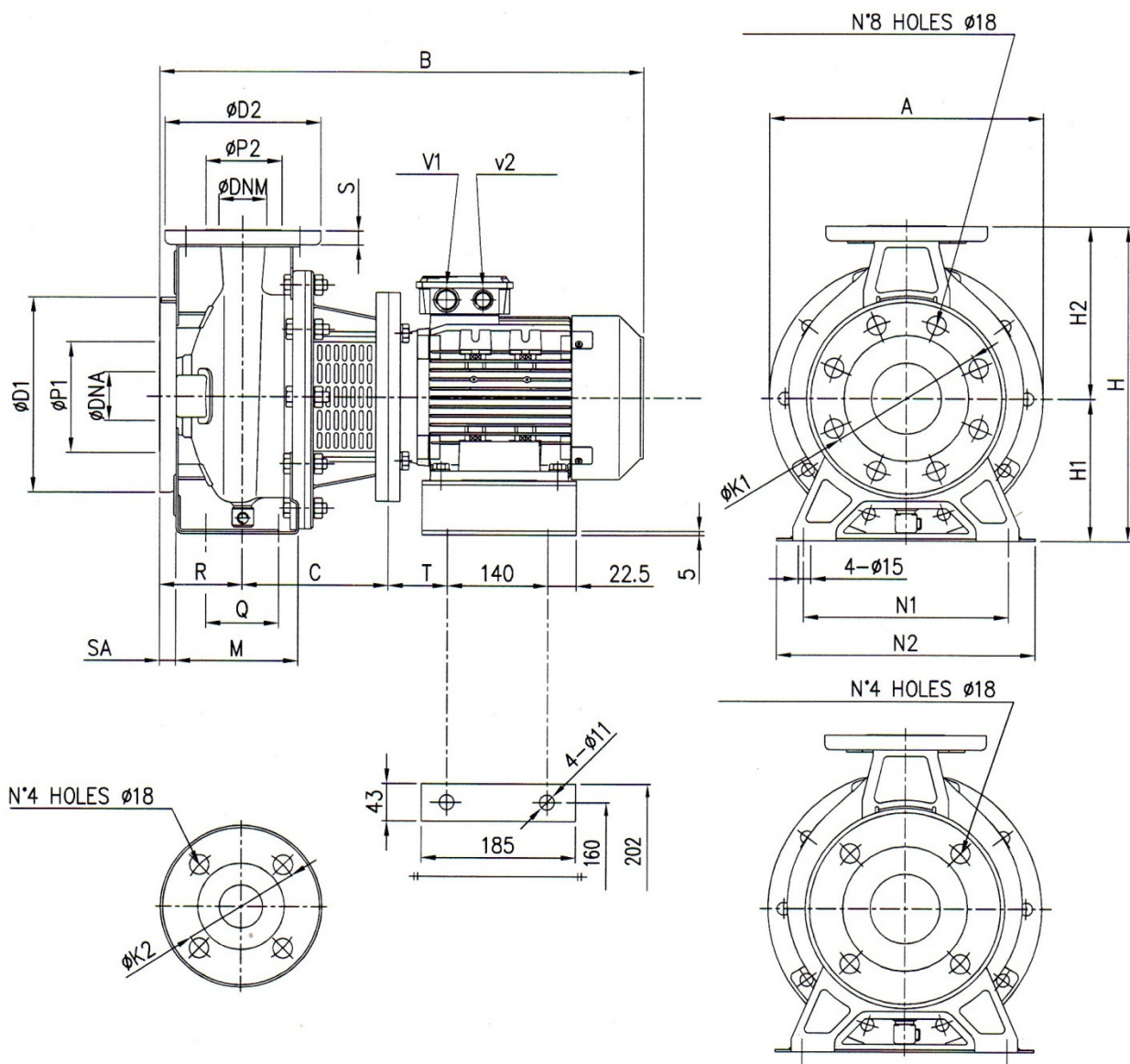


3 LS 80-250/55

Dimensions – 1.450 min-1



Pump type	Dimensions [mm]																										standard	No. Holes On request		
	A	B	C	D	H	H1	H2	L1	L2	M	N1	N2	Q	R	S	T	W	ØD1	ØK1	ØP1	ØD2	ØK2	ØP2	SA	ØDNA	ØDNM			V1	V2
32-125/0.25	213	401	108	8	252	112	140	112	140	114	140	190	70	80	14	45	15	165	125	96	140	100	76	16	50	32	PG11	PG13.5	4	-
32-160/0.37R	254	401	108	8	292	132	160	112	140	118	190	240	70	80	14	45	15	165	125	96	140	100	76	16	50	32	PG11	PG13.5	4	-
32-160/0.37	254	401	108	8	292	132	160	112	140	118	190	240	70	80	14	45	15	165	125	96	140	100	76	16	50	32	PG11	PG13.5	4	-
32-200/0.55R	296	435	118	10	340	160	180	140	168	119	190	240	70	80	14	56	15	165	125	96	140	100	76	16	50	32	PG13.5	PG16	4	-
32-200/0.55	296	435	118	10	340	160	180	140	168	119	190	240	70	80	14	56	15	165	125	96	140	100	76	16	50	32	PG13.5	PG16	4	-
32-200/0.75	296	435	118	10	340	160	180	140	168	119	190	240	70	80	14	56	15	165	125	96	140	100	76	16	50	32	PG13.5	PG16	4	-
40-125/0.37R	213	401	118	8	252	112	140	112	140	114	160	210	70	80	14	45	15	185	145	116	150	110	81	16	65	40	PG11	PG13.5	4	-
40-125/0.37	213	401	118	8	252	112	140	112	140	114	160	210	70	80	14	45	15	185	145	116	150	110	81	16	65	40	PG11	PG13.5	4	-
40-160/0.55R	254	435	118	10	292	132	160	140	168	118	190	240	70	80	14	56	15	185	145	116	150	110	81	16	65	40	PG13.5	PG16	4	-
40-160/0.55	254	435	118	10	292	132	160	140	168	118	190	240	70	80	14	56	15	185	145	116	150	110	81	16	65	40	PG13.5	PG16	4	-
40-200/1.1R	294	487	130	10	340	160	180	140	168	139	212	265	70	100	14	56	15	185	145	116	150	110	81	16	65	40	PG13.5	PG16	4	-
40-200/1.1	294	487	130	10	340	160	180	140	168	139	212	265	70	100	14	56	15	185	145	116	150	110	81	16	65	40	PG13.5	PG16	4	-
40-200/1.5	294	512	130	10	340	160	180	140	168	139	212	265	70	100	14	56	15	185	145	116	150	110	81	16	65	40	PG13.5	PG16	4	-
50-125/0.55R	254	452	118	10	292	132	160	140	168	138	190	240	70	100	16	56	15	185	145	116	165	125	96	16	65	50	PG13.5	PG16	4	-
50-125/0.55	254	452	118	10	292	132	160	140	168	138	190	240	70	100	16	56	15	185	145	116	165	125	96	16	65	50	PG13.5	PG16	4	-
50-160/1.1R	296	487	130	10	340	160	180	140	168	139	212	265	70	100	16	56	15	185	145	116	165	125	96	16	65	50	PG13.5	PG16	4	-
50-160/1.1	296	487	130	10	340	160	180	140	168	139	212	265	70	100	16	56	15	185	145	116	165	125	96	16	65	50	PG13.5	PG16	4	-
50-200/1.5R	296	512	130	10	360	160	200	140	168	139	212	265	70	100	16	56	15	185	145	116	165	125	96	16	65	50	PG13.5	PG16	4	-
50-200/1.5	296	512	130	10	360	160	200	140	168	139	212	265	70	100	16	56	15	185	145	116	165	125	96	16	65	50	PG13.5	PG16	4	-
65-125/0.55	254	450	118	10	340	160	180	140	168	150	212	280	90	100	16	56	15	200	160	134	185	145	115	18	80	65	PG16	PG13.5	8	4
65-125/0.75	254	450	118	10	340	160	180	140	168	150	212	280	90	100	16	56	15	200	160	134	185	145	115	18	80	65	PG16	PG13.5	8	4
65-125/1.1	254	497	130	10	340	160	180	140	168	150	212	280	90	100	16	56	15	200	160	134	185	145	115	18	80	65	PG16	PG13.5	8	4
65-160/1.1	296	497	130	10	360	160	200	140	168	150	212	280	90	100	16	56	15	200	160	134	185	145	115	18	80	65	PG16	PG13.5	8	4
65-160/1.5	296	497	130	10	360	160	200	140	168	150	212	280	90	100	16	56	15	200	160	134	185	145	115	18	80	65	PG16	PG13.5	8	4



Pump type	Dimensions [mm]																						No. Holes			
	A	B	C	H	H1	H2	M	N1	N2	Q	R	S	T	ØD1	ØK1	ØP1	ØD2	ØK2	ØP2	SA	ØDNA	ØDNM	V1	V2	standard	On request
50-200/2.2	296	555	142	360	160	200	115	212	265	70	100	16	70	185	145	116	185	125	96	16	65	50	PG16	PG13.5	4	-
65-160/2.2	296	548	142	360	160	200	145	212	280	95	100	16	63	200	160	134	185	145	115	18	80	65	PG16	PG13.5	8	4
65-200/2.2R	296	548	142	405	180	225	145	250	320	95	100	16	63	200	160	134	185	145	115	18	80	65	PG16	PG13.5	8	4
65-200/2.2	296	548	142	405	180	225	145	250	320	95	100	16	63	200	160	134	185	145	115	18	80	65	PG16	PG13.5	8	4
65-200/3.0	296	548	142	405	180	225	145	250	320	95	100	16	63	200	160	134	185	145	115	18	80	65	PG16	PG13.5	8	4

Nr. Bezeichnung SERIE 3

-
- This diagram shows the exploded view of a 3S motor assembly. The main components are labeled with numbers: 1 (motor housing), 2 (motor base), 3 (motor frame), 4 (motor end cap), 5 (motor shaft), 6 (motor pin), 7 (motor pulley), 8 (motor pulley), 9 (motor pulley), 10 (motor pulley), 11 (motor pulley), 12 (motor pulley), 13 (motor pulley), 14 (motor pulley), 15 (motor pulley), 16 (motor pulley), 17 (motor pulley), 18 (motor pulley), 19 (motor pulley), 20 (motor pulley), 21 (motor pulley), 22 (motor pulley), 23 (motor pulley), 24 (motor pulley), 25 (motor pulley), 26 (motor pulley), 27 (motor pulley), 28 (motor pulley), 29 (motor pulley), 30 (motor pulley), 31 (motor pulley), 32 (motor pulley), 33 (motor pulley), 34 (motor pulley), 35 (motor pulley), 36 (motor pulley), 37 (motor pulley), 38 (motor pulley), 39 (motor pulley), 40 (motor pulley), 41 (motor pulley), 42 (motor pulley), 43 (motor pulley), 44 (motor pulley), 45 (motor pulley), 46 (motor pulley), 47 (motor pulley), 48 (motor pulley), 49 (motor pulley), 50 (motor pulley), 51 (motor pulley), 52 (motor pulley), 53 (motor pulley), 54 (motor pulley), 55 (motor pulley), 56 (motor pulley), 57 (motor pulley), 58 (motor pulley), 59 (motor pulley), 60 (motor pulley), 61 (motor pulley), 62 (motor pulley), 63 (motor pulley), 64 (motor pulley), 65 (motor pulley), 66 (motor pulley), 67 (motor pulley), 68 (motor pulley), 69 (motor pulley), 70 (motor pulley), 71 (motor pulley), 72 (motor pulley), 73 (motor pulley), 74 (motor pulley), 75 (motor pulley), 76 (motor pulley), 77 (motor pulley), 78 (motor pulley), 79 (motor pulley), 80 (motor pulley), 81 (motor pulley), 82 (motor pulley), 83 (motor pulley), 84 (motor pulley), 85 (motor pulley), 86 (motor pulley), 87 (motor pulley), 88 (motor pulley), 89 (motor pulley), 90 (motor pulley), 91 (motor pulley), 92 (motor pulley), 93 (motor pulley), 94 (motor pulley), 95 (motor pulley), 96 (motor pulley), 97 (motor pulley), 98 (motor pulley), 99 (motor pulley), 100 (motor pulley).

jeder Demontage ausgetauscht werden

bei 3P / PF
3S

3M



Basic data:

Capacity:	up to 240 m ³ /h
Discharge head::	up to 90 m W.S.
Connections:	DN 32 – DN 100
Motor speed:	1450 and 2900 min ⁻¹